



CERVICAL FUSION

# CONSTRUX<sup>®</sup>

MINI PEEK SPACER SYSTEM



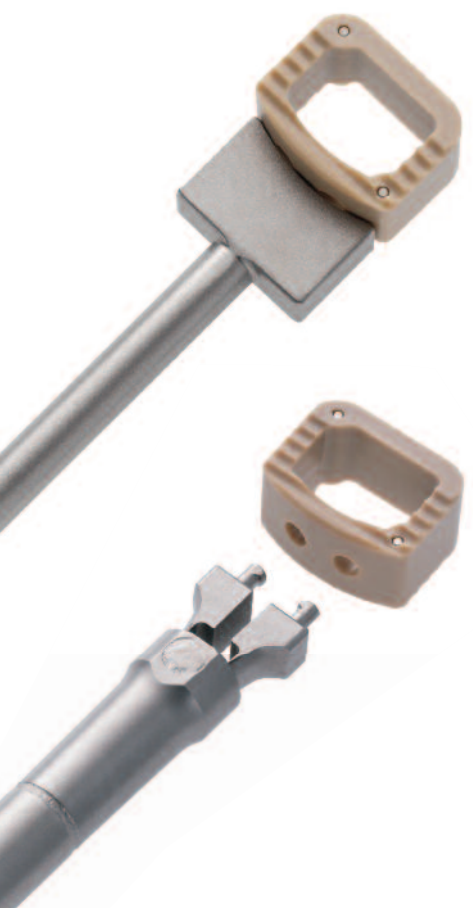
Spinal Implants | Biologics | Spine Fusion Stimulation | MIS | Bracing

# CONSTRUX™

MINI PEEK SPACER SYSTEM

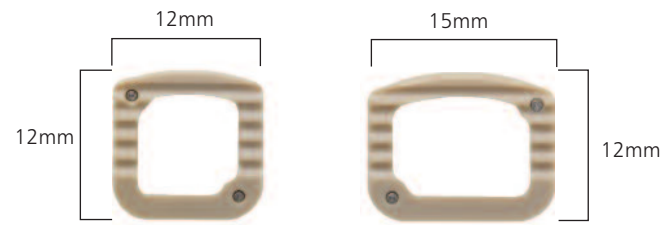
## SIMPLE YET COMPREHENSIVE, RELIABLE AND AMAZINGLY VERSATILE

CONSTRUX Mini offers implant options with heights ranging from 5mm to 14mm as a cervical interbody or partial vertebrectomy solution. Its large graft window promotes fusion potential while its two footprint designs and lordotic angles cater to a broad range of patient anatomy. Aggressive anti-migration ribs grip the endplates and four titanium markers enhance intraoperative visibility.



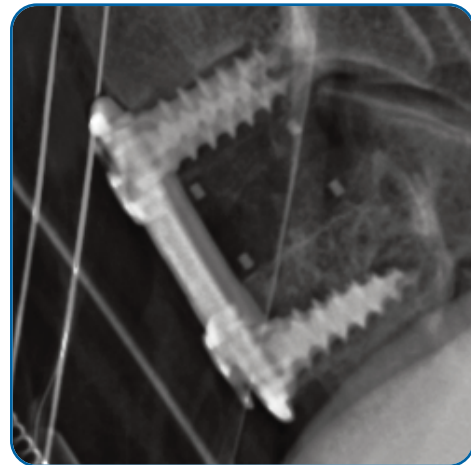
### 2 Footprints

- 12mm x 12mm
- 15mm x 12mm



### Parallel and Lordotic (5°) 5mm to 14mm heights

- 1mm increments



### Unique Design Characteristics

- Radiolucent implant with titanium markers for intraoperative visibility
- Anti-migration ribs for secure placement
- Large center opening for packing bone grafting material
- Multiple implant options enable various surgical solutions
- Straightforward instrumentation for easy implantation

## 12MM x 12MM LORDOTIC

| Implant# | Trial#  | Description                           | Graft Volume (cc) |
|----------|---------|---------------------------------------|-------------------|
| 47-3005C | 47-1005 | 12mm W x 12mm L, 5° Lordotic - 5mm H  | 0.28              |
| 47-3006C | 47-1006 | 12mm W x 12mm L, 5° Lordotic - 6mm H  | 0.34              |
| 47-3007C | 47-1007 | 12mm W x 12mm L, 5° Lordotic - 7mm H  | 0.40              |
| 47-3008C | 47-1008 | 12mm W x 12mm L, 5° Lordotic - 8mm H  | 0.46              |
| 47-3009C | 47-1009 | 12mm W x 12mm L, 5° Lordotic - 9mm H  | 0.52              |
| 47-3010C | 47-1010 | 12mm W x 12mm L, 5° Lordotic - 10mm H | 0.58              |
| 47-3011C | 47-1011 | 12mm W x 12mm L, 5° Lordotic - 11mm H | 0.64              |
| 47-3012C | 47-1012 | 12mm W x 12mm L, 5° Lordotic - 12mm H | 0.70              |
| 47-3013C | 47-1013 | 12mm W x 12mm L, 5° Lordotic - 13mm H | 0.76              |
| 47-3014C | 47-1014 | 12mm W x 12mm L, 5° Lordotic - 14mm H | 0.82              |

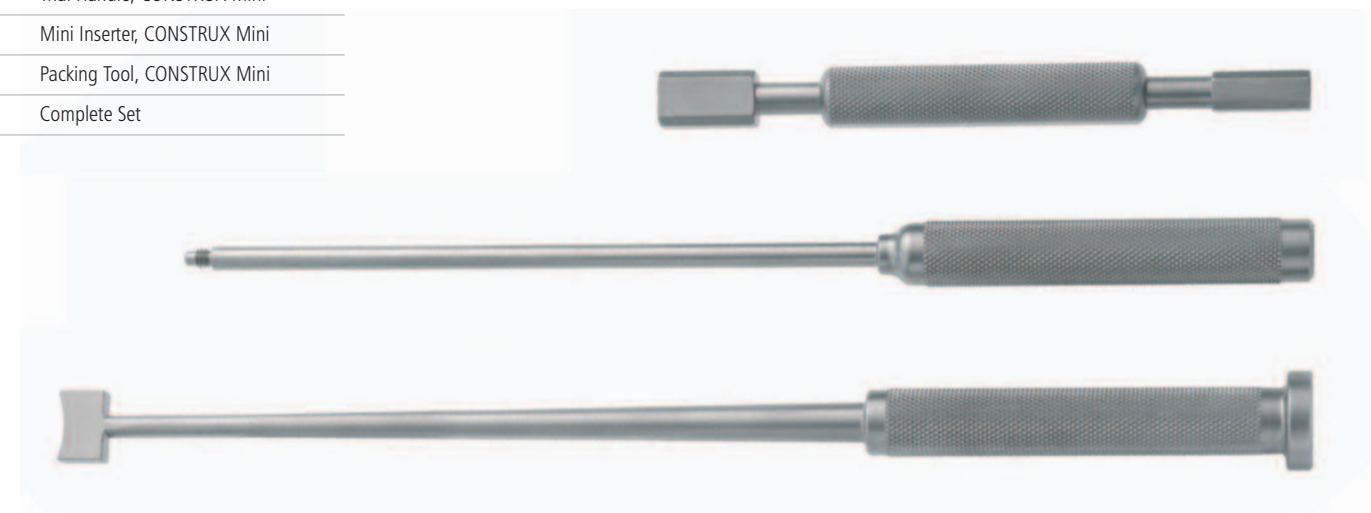
## 12MM x 12MM PARALLEL

| Implant# | Trial#  | Description                        | Graft Volume (cc) |
|----------|---------|------------------------------------|-------------------|
| 47-3105C | 47-1105 | 12mm W x 12mm L, Parallel - 5mm H  | 0.31              |
| 47-3106C | 47-1106 | 12mm W x 12mm L, Parallel - 6mm H  | 0.37              |
| 47-3107C | 47-1107 | 12mm W x 12mm L, Parallel - 7mm H  | 0.43              |
| 47-3108C | 47-1108 | 12mm W x 12mm L, Parallel - 8mm H  | 0.49              |
| 47-3109C | 47-1109 | 12mm W x 12mm L, Parallel - 9mm H  | 0.55              |
| 47-3110C | 47-1110 | 12mm W x 12mm L, Parallel - 10mm H | 0.61              |
| 47-3111C | 47-1111 | 12mm W x 12mm L, Parallel - 11mm H | 0.67              |
| 47-3112C | 47-1112 | 12mm W x 12mm L, Parallel - 12mm H | 0.73              |
| 47-3113C | 47-1113 | 12mm W x 12mm L, Parallel - 13mm H | 0.79              |
| 47-3114C | 47-1114 | 12mm W x 12mm L, Parallel - 14mm H | 0.85              |

Items in blue available upon request only.

## INSTRUMENTS

| PART#     | DESCRIPTION                  |
|-----------|------------------------------|
| 30-1030   | Impactor                     |
| 47-0090   | System Case, CONSTRUX Mini   |
| 47-1020   | Trial Handle, CONSTRUX Mini  |
| 47-1030   | Mini Inserter, CONSTRUX Mini |
| 47-1050   | Packing Tool, CONSTRUX Mini  |
| 450216-00 | Complete Set                 |



## 15MM x 12MM LORDOTIC

| Implant# | Trial#  | Description                           | Graft Volume (cc) |
|----------|---------|---------------------------------------|-------------------|
| 47-4005C | 47-2005 | 15mm W x 12mm L, 5° Lordotic - 5mm H  | 0.38              |
| 47-4006C | 47-2006 | 15mm W x 12mm L, 5° Lordotic - 6mm H  | 0.47              |
| 47-4007C | 47-2007 | 15mm W x 12mm L, 5° Lordotic - 7mm H  | 0.55              |
| 47-4008C | 47-2008 | 15mm W x 12mm L, 5° Lordotic - 8mm H  | 0.63              |
| 47-4009C | 47-2009 | 15mm W x 12mm L, 5° Lordotic - 9mm H  | 0.71              |
| 47-4010C | 47-2010 | 15mm W x 12mm L, 5° Lordotic - 10mm H | 0.79              |
| 47-4011C | 47-2011 | 15mm W x 12mm L, 5° Lordotic - 11mm H | 0.88              |
| 47-4012C | 47-2012 | 15mm W x 12mm L, 5° Lordotic - 12mm H | 0.96              |
| 47-4013C | 47-2013 | 15mm W x 12mm L, 5° Lordotic - 13mm H | 1.04              |
| 47-4014C | 47-2014 | 15mm W x 12mm L, 5° Lordotic - 14mm H | 1.12              |

## 15MM x 12MM PARALLEL

| Implant# | Trial#  | Description                        | Graft Volume (cc) |
|----------|---------|------------------------------------|-------------------|
| 47-4105C | 47-2105 | 15mm W x 12mm L, Parallel - 5mm H  | 0.43              |
| 47-4106C | 47-2106 | 15mm W x 12mm L, Parallel - 6mm H  | 0.51              |
| 47-4107C | 47-2107 | 15mm W x 12mm L, Parallel - 7mm H  | 0.59              |
| 47-4108C | 47-2108 | 15mm W x 12mm L, Parallel - 8mm H  | 0.67              |
| 47-4109C | 47-2109 | 15mm W x 12mm L, Parallel - 9mm H  | 0.76              |
| 47-4110C | 47-2110 | 15mm W x 12mm L, Parallel - 10mm H | 0.84              |
| 47-4111C | 47-2111 | 15mm W x 12mm L, Parallel - 11mm H | 0.92              |
| 47-4112C | 47-2112 | 15mm W x 12mm L, Parallel - 12mm H | 1.00              |
| 47-4113C | 47-2113 | 15mm W x 12mm L, Parallel - 13mm H | 1.08              |
| 47-4114C | 47-2114 | 15mm W x 12mm L, Parallel - 14mm H | 1.17              |